



IML-RESI PD-Series IML PowerDrill®

Uncompromisingly precision
for all applications

(Status 08/2011)

IML-RESI PD-Series

Electronic instrument for demanding applications with individual special options

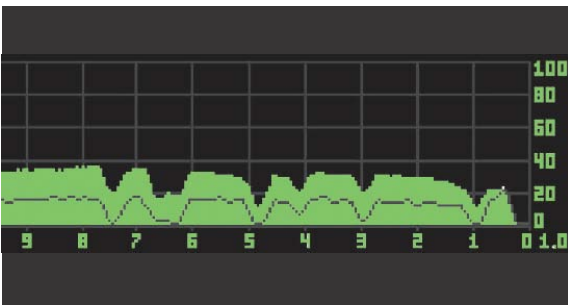
Safety with system - the IML-RESI PD-Series (IML PowerDrill®) for all applications

Advantages on a view:

- Rugged aluminum grip housing with integrated system guidance
- Electronic is protected in waterproof high quality stainless steel housing
- Integrated 45°-adapter for individual application on trees and timber structures
- Exchangeable 18V Li-Ion battery
- Replaceable drill bit guide with new designed telescope guidance
- Durable and smooth running driving screw
- Adjustable feed speed up to 250 cm/min
- Adjustable rotation speed of the drilling needle up to 5000 rpm
- Automatic or manual change of the drilling needle
- Simultaneous recording of the drilling resistance & feed speed measuring curve
- USB and Bluetooth interface
- Extended options & additional modules are available!

Technical data:

- Drilling depths: 200 mm up to 1000 mm
- Drive unit: Lithium-Ions battery
- Result: Electronical measuring data storage
option: Bluetooth printer
- Resolution: 0,02 mm/300mm
- Feed stages: 5 free selectable feed stages
- 25 cm/min up to 250 cm/min
- Needle speed stages: 5 free selectable rotational speed stages
of the drilling needle
- min. 1000 U/rpm up to 5000 U/rpm

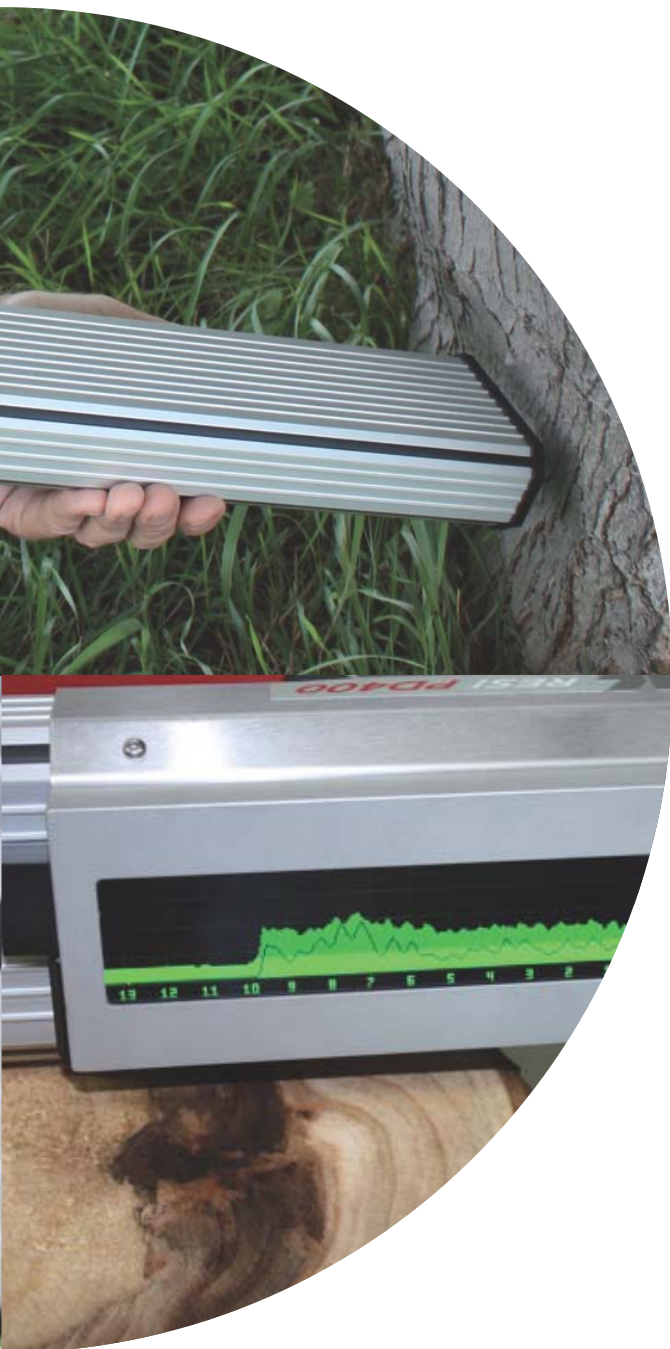


Additional modules & options:

- Memory enlargement up to 50, 100 or 180 meters recording length of the measuring curves
- Tilt sensor
- Scaling package
- Drilling needle breakage detection
- Access control
- Remote control interface

IML PowerDrill®

Electronic unit & analysis software



Electronic unit - Explicit results for reliable evaluations

The display includes the following data:

- Drilling resistance measuring curve and feed speed measuring curve (additional module)
- Feed stage & feed speed
- Number of stored measurements
- Remaining free memory
- ID-number / remark
- Drilling angle (tilt sensor - additional module)
- Drilling depth pre-selection
- Needle speed stage & needle speed (additional module)
- Status bar: date, time, battery indicator, connection

IML Software Center PD-Tools / PD-Tools Pro Expanded software modules

- Standard software PD-Tools
Standard functions: configuration, transmission, printing-out in general views
- Expanded software PD-Tools Pro
Standard functions
+ Export, average, print-out
+ Cavity detector
+ Annual ring analysis
- Additional module 'Pole Inspector' (+ PD-Tools Pro)
- Automatic analysis for pole inspections



IML PowerDrill® is a registered trademark of IML-Instrumenta Mechanik Labor GmbH, Germany.



Experience and know-how of the experts - Seminars & workshops worldwide

Safety and service

IML is the leading manufacturer of test and measuring instruments for trees and timber structures and offers a unique combination of wood-functional and device-related expertise.

- Service inspection and calibration
- Customer service worldwide
- TÜV certified quality and guarantee



Technical knowledge - Intensive courses & trainings

Learn about the functions, the measurement methods and the technical use and profit from the correct use of the instruments as well as the correct interpretation of your measurement values!

- Intensive courses for professional use of our instruments
- Interpretation and evaluation of measurement profiles
- Individual seminars, workshops and Inhouse-trainings



For current seminar and workshop dates see: www.imlaustralia.com



IML Australia
Contact: Peter Blank
P.O. Box 82
Northlands, Toowoomba
QLD 4350
Australia

Phone: +61 07 4639 3746
Mobile: +61 0418 709 846
Fax: +61 07 4639 1343

imlaustralia@bigpond.com
www.imlaustralia.com

www.imlaustralia.com